

Extronic World



extronicworld.com

extronicworld.io

Presented By RS Group



ABOUT METaverse

The term "metaverse" refers to a virtual, digital universe where people can interact with each other and digital objects in a shared, interconnected space. It's a concept that has gained significant attention in recent years and is often associated with advancements in technology, particularly virtual reality (VR), augmented reality (AR), blockchain, and other immersive technologies.

Many technology companies, including Meta Platforms (formerly Facebook), Google, Microsoft, and others, are investing heavily in metaverse-related projects. These companies view the metaverse as the next frontier for technology and digital experiences.

Facebook : Meta, the parent company of Facebook, has made significant investments in the metaverse. They are developing a metaverse ecosystem that includes VR and AR technologies, as well as social and digital interaction platforms.

Microsoft : Microsoft's involvement in the metaverse includes initiatives like Microsoft Mesh, a mixed-reality platform for collaborative experiences.

Google : Google has shown interest in the metaverse space, with investments in AR and VR technologies like Google Glass and Google Daydream. They have also explored VR experiences through Google Earth.

Sony : Sony is a major player in the gaming industry with its PlayStation platform. They are exploring VR and immersive technologies that could contribute to the metaverse.





ABOUT US

RS Group Dream Land is a virtual country in the metaverse operated by RS Group (E-Government). In this country every person can buy a plot and earn many times more income. The virtual currency of this country is RSG Token.

Digital Universe: The metaverse is a vast digital environment where users can create, explore, and interact with a variety of virtual experiences. It aims to create a sense of presence and immersion, making users feel as if they are physically present in the digital world.

User Interaction : Central to the metaverse is the ability for users to interact with each other in real time. This interaction can encompass socializing, gaming, conducting business, attending events, or collaborating on projects.

Technology Enablers : The development of the metaverse relies heavily on technologies such as VR headsets, AR glasses, high-speed internet, cloud computing, and advanced graphics. These technologies are crucial for creating immersive and engaging virtual experiences.

Digital Ownership and Blockchain : Some proponents of the metaverse envision blockchain technology playing a significant role in establishing ownership and trade of digital assets within the virtual space. Non-fungible tokens (NFTs) are one example of how digital assets can be uniquely owned and traded.

Social and Economic Impact : The metaverse has the potential to transform various aspects of society and the economy. It could create new opportunities and challenges in areas like virtual economies, digital privacy, online education, and remote work.

UNPRECEDENTED SCALE



Congrats to all Extrinsic World will opening the Gates on June 2024.

Be the Part of Incremental Profit Journey.

Parcel- Unit block of Virtual Land.

*A user can purchase as many as Parcel they want.

Total Parcel : **5,40,000**

Each parcel is a digital canvas awaiting your touch, offering limitless potential for creativity and exploration. Embark on a journey through this digital realm, where every corner holds a new story and every interaction unveils a world of endless possibilities.

Beginning our most awaited Virtual Land Purchases.

This time profit opportunity will knock you 7 Times

Phase	Date	POD Parcel Quantity	Base Price
Phase 1	June 2024 - Feb 2025	113400	Current Live Price on Listings(Base Price)
Phase 2	March 2025 - Dec 2025	71100	10% Increase on 1st Phase Base Price
Phase 3	Jan 2026 - Nov 2026	71100	10% Increase on 1st Phase Base Price
Phase 4	Dec 2026 - Aug 2027	71100	10% Increase on 1st Phase Base Price
Phase 5	Sep 2027 - April 2027	71100	15% Increase on 1st Phase Base Price
Phase 6	May 2027 - Feb 2028	71100	15% Increase on 1st Phase Base Price
Phase 7	March 2028 - Feb 2029	71100	15% Increase on 1st Phase Base Price

PROFITABLE OPPORTUNITY



Avatar - Virtual Humanoid Clone

Make your own Custom Avatar using Gallery NFT's



Builder Tools

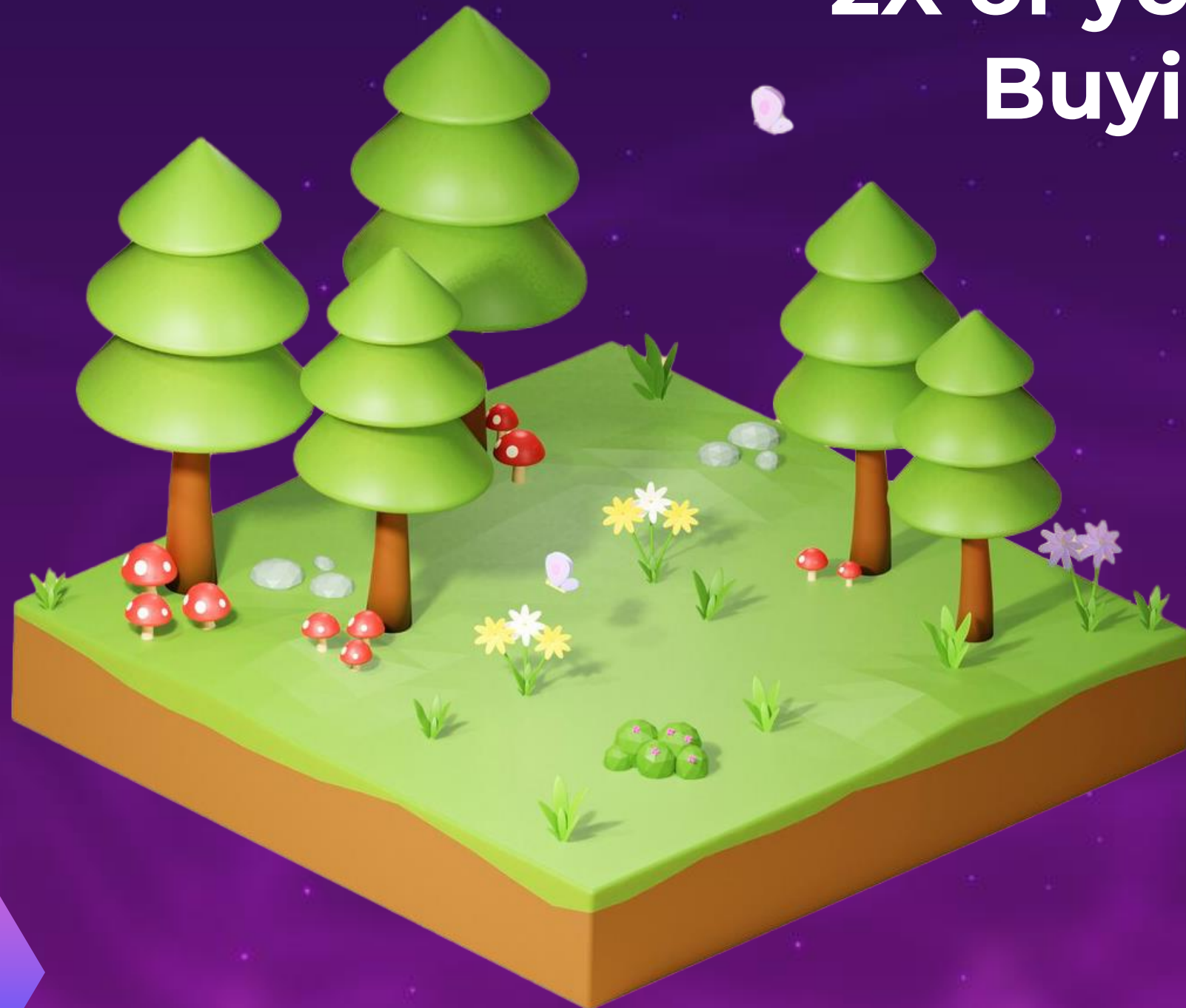
Exciting New Opportunity for Creatives person to create custom unique NFTs to add in Gallery, for personal Avatar use as well as Sell to other members for profit.

NFTs Buy/Sell

PACKAGE

Level	Investment	Land
1	\$30	Investment In Environmental Project
2	\$120	Land For Rural Area
3	\$300	Land For Village Home
4	\$600	Land For Own Home & Rental Area
5	\$1200	Land For Real Estate
6	\$1500	Land For Agriculture
7	\$2400	Land For Commercial Area
8	\$3000	Land For Prime Location
9	\$6000	Land For Luxury Location
10	\$9000	Land For Extra Luxury Location

Stake your Property for **4 years**
& Get
2X of your Property
Buying Price



Stake Fee :

15% of your Property value.

ASSURED RENTAL INCOME

(FROM REAL STATE COMPANY)

Level	Property Value	Development Amount	Total Investment	Assured Rental Income
1	\$30	-	-	-
2	\$120	\$120	240	4% per month
3	\$300	\$300	\$600	4% per month
4	\$600	\$600	\$1200	4% per month
5	\$1200	\$1200	\$2400	4% per month
6	\$1500	\$1500	\$3000	4% per month
7	\$2400	\$2400	\$4800	4% per month
8	\$3000	\$3000	\$6000	4% per month
9	\$6000	\$6000	\$12000	5% per month
10	\$9000	\$9000	\$18000	6% per month

* The property lease agreement is min. 1 Year and maximum upto total value of property.

BUSINESS PROPOSAL

S.No	Rank	Percentage	Self Land Pkg.	Team Business Target	Terms
1	Executive	6%	\$30	0	-
2	Sales Executive	7%	\$30	\$1500	When you will do \$1500 Business then you became a sales executive
3	Sales Manager	9%	\$120	\$9000	After \$9000 Business + 2 sales executive from 2 different teams then he/she will be promoted to Sales Manager
4	Area S.M.	10%	\$120	\$27,000	After \$27,000 Business + 2 sales manager from 2 different team is achieved then he/she will be promoted to A.S.M.
5	Zonal Head	11%	\$300	\$90,000	After \$90,000 Business + 2 A.S.M. from 2 different team is achieved then he/she will be promoted to Zonal Head.
6	Project Head	12%	\$300	\$1,80,000	After \$1,80,000 Business + 2 zonal head from 2 different team is achieved then he/she will be promoted to Project Head.
7	Sr. Project Head	13%	\$600	\$3,60,000	After \$3,60,000 Business + 2 project head from 2 different team is achieved then he/she will be promoted to Sr. Project Head
8	Project Director	15%	\$600	\$12,00,000	After \$12,00,000 business +2 Sr. project head from 2 different team is achieved then he/she will be promoted to Project Director
9	Gold Director	16%	\$1200	\$24,00,000	After \$24,00,000 business + 2 Project Director from 2 different teams then he/she will promoted to Gold Director
10	Diamond Director	17%	\$1200	2 Gold Director	After 2 Gold Director from 2 different teams then he/she will promoted to Diamond Director
11	Emerald Director	18%	\$1500	2 Diamond Director	After 2 Diamond Director from 2 different teams then he/she will promoted to Embroided Director
12	Trustee	20%	\$3000	3 Emerald	After 3 Emerald Director from 3 different teams then he/she will promoted to Trustee

ROYALTY INCOME

Rank	Royalty Income	Monthly Target
Sr. Project Head	\$600 P.M X 12 month	\$900 in each 2 different leg
Diamond Director	\$900 P.M X 12 month	\$1800 in each 2 different leg
Emerald Director	\$1200 P.M X 12 month	\$3600 in each 2 different leg
Trusty	\$1800 P.M X 12 month	\$9000 in each 2 different leg



LIFE TIME REWARDS

S.No	Rank	Rewards
1	Zonal Head	LDP Programme 2N/3D with Accommodation & fooding
2	Project Head	Laptop (\$402.93)
3	Sr. Project Head	Bike (\$671.55)
4	Project Director	Bullet (\$1678.87)
5	Gold Director	S-Presso (\$6715.48)
6	Diamond Director	Mahindra Thar (\$20,146.42)
7	Emerald Director	Audi (\$40,292.85)
8	Trustee	Bungalow (\$100000)



* All Rewards will be credited on RUSD.

PASSIVE INCOME FROM CRV= 24%

S.No	Rank	Percentage	Self land pkg.	Business target
5	Zonal Head	9%	\$300	\$600 in each 2 different leg
7	Sr. Project Head	15%	\$600	\$900 in each 2 different leg
10	Diamond Director	18%	\$1200	\$1800 in each 2 different leg
11	Emerald Director	21%	\$1500	\$3600 in each 2 different leg
12	Trustee	24%	\$3000	\$9000 in each 2 different leg

* CRV= Country Revenue Value.

* All revenue distribute on own team collected CRV.

TERMS

Withdrawal

Withdrawal requests can be made on the 1st and 16th of every month between 5:00 PM to 10:00 PM and process on 15th and 30th of every month.

Deduction On Commission

10% Admin Charge

Deduction On Rental

10% Admin Charge

Deduction On P2P RUSD

3% Admin Charge



Thank You

Presented By RS Group

extronicworld.io
extronicworld.com

